

**Appendix 2
Population Data for Wealden**

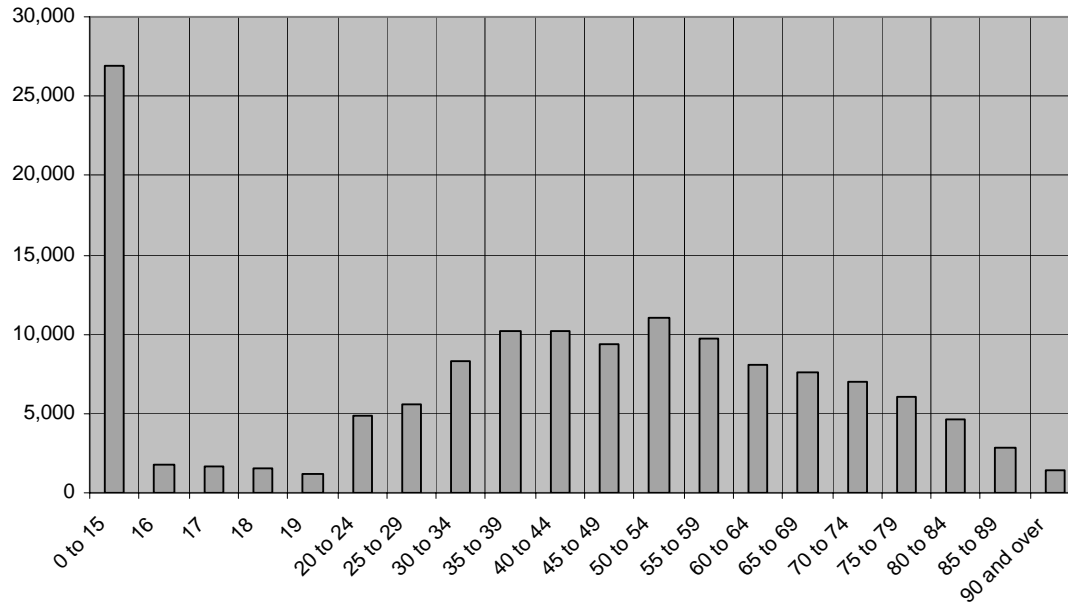
Age

Age of Residents in Wealden, Census 2001 Nomis

Age Range	Population
S002:16 (All People - Aged 0 to 15 : All People)	26,971
S002:31 (All People - Aged 16 : All People)	1,740
S002:46 (All People - Aged 17 : All People)	1,607
S002:61 (All People - Aged 18 : All People)	1,590
S002:76 (All People - Aged 19 : All People)	1,185
S002:91 (All People - Aged 20 to 24 : All People)	4,883
S002:106 (All People - Aged 25 to 29 : All People)	5,616
S002:121 (All People - Aged 30 to 34 : All People)	8,320
S002:136 (All People - Aged 35 to 39 : All People)	10,181
S002:151 (All People - Aged 40 to 44 : All People)	10,179
S002:166 (All People - Aged 45 to 49 : All People)	9,332
S002:181 (All People - Aged 50 to 54 : All People)	11,059
S002:196 (All People - Aged 55 to 59 : All People)	9,761
S002:211 (All People - Aged 60 to 64 : All People)	8,024
S002:226 (All People - Aged 65 to 69 : All People)	7,584
S002:241 (All People - Aged 70 to 74 : All People)	7,027
S002:256 (All People - Aged 75 to 79 : All People)	6,041
S002:271 (All People - Aged 80 to 84 : All People)	4,571
S002:286 (All People - Aged 85 to 89 : All People)	2,886
S002:301 (All People - Aged 90 and over : All People)	1,466

*Graph showing Age of Residents in Wealden
Data from Census 2001, Nomis*

Wealden Equality Scheme 2007-2010



Total Wealden Population 140,023

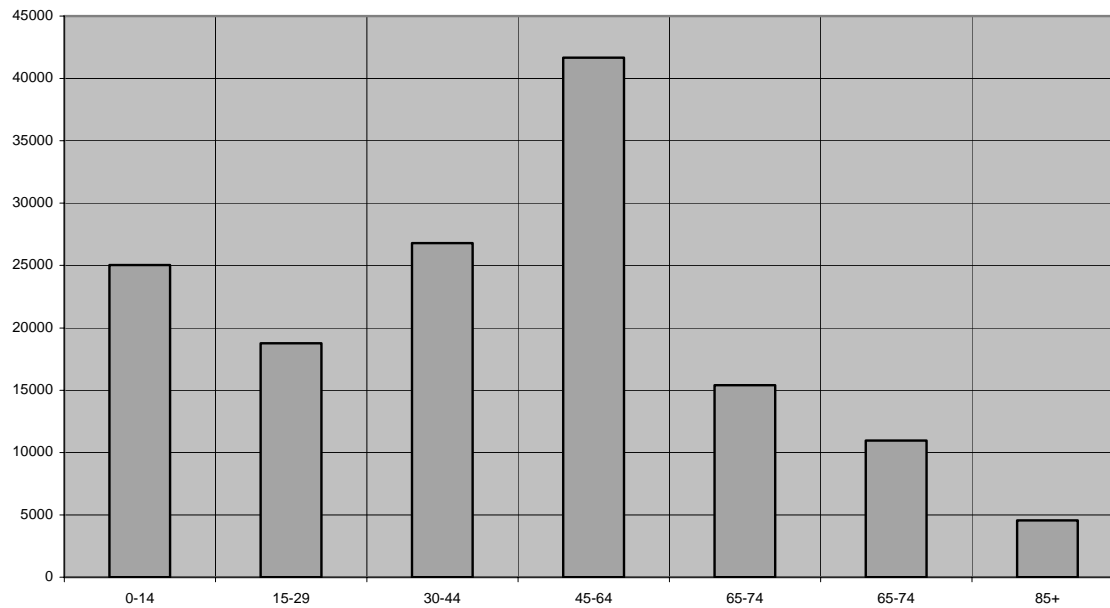
Note: the breakdown of ages at the higher and lower end of the graph do not match the age ranges in the middle, the number of under 18s and over 65s are similar, 30,318 and 29,575 respectively.

Wealden Equality Scheme 2007-2010

Population Estimates 2006, East Sussex in Figures

Age Range	Population
0-14	25035
15-29	18753
30-44	26789
45-64	41671
65-74	15403
65-74	10963
85+	4569

*Graph showing population in Wealden
Data from Population Estimates 2006, East Sussex in Figures*



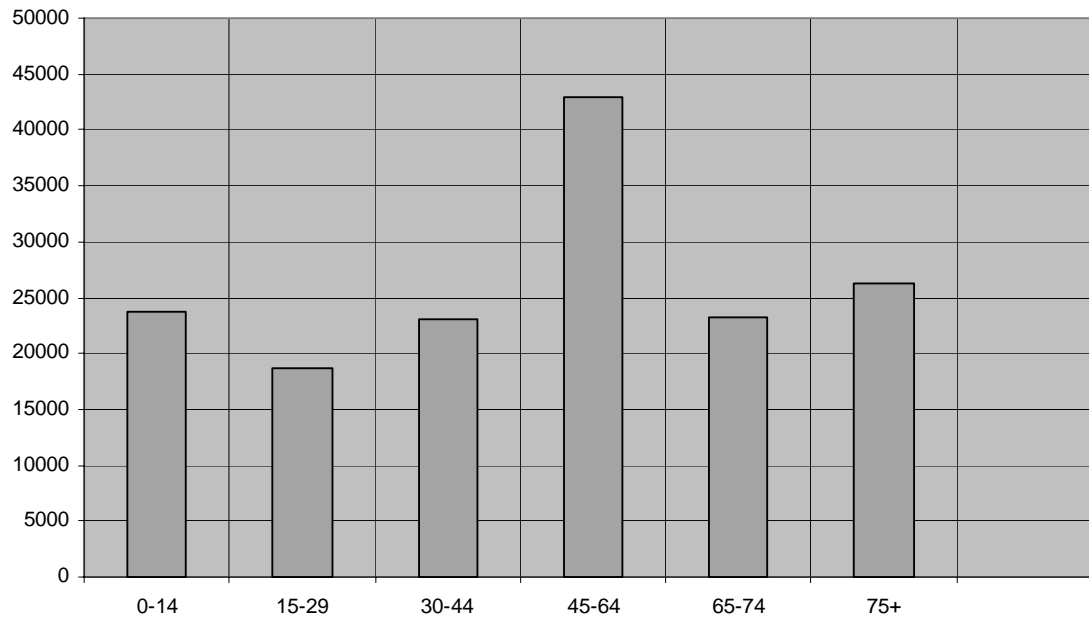
Total Wealden population *estimated* at 143,181

Wealden Equality Scheme 2007-2010

Population Projections (Trend based) 2004-2029, East Sussex in Figures

Age Range	Population
0-14	23700
15-29	18700
30-44	23100
45-64	42900
65-74	23200
75+	26300

*Graph showing population projections 2004-2029
Data from East Sussex in Figures*



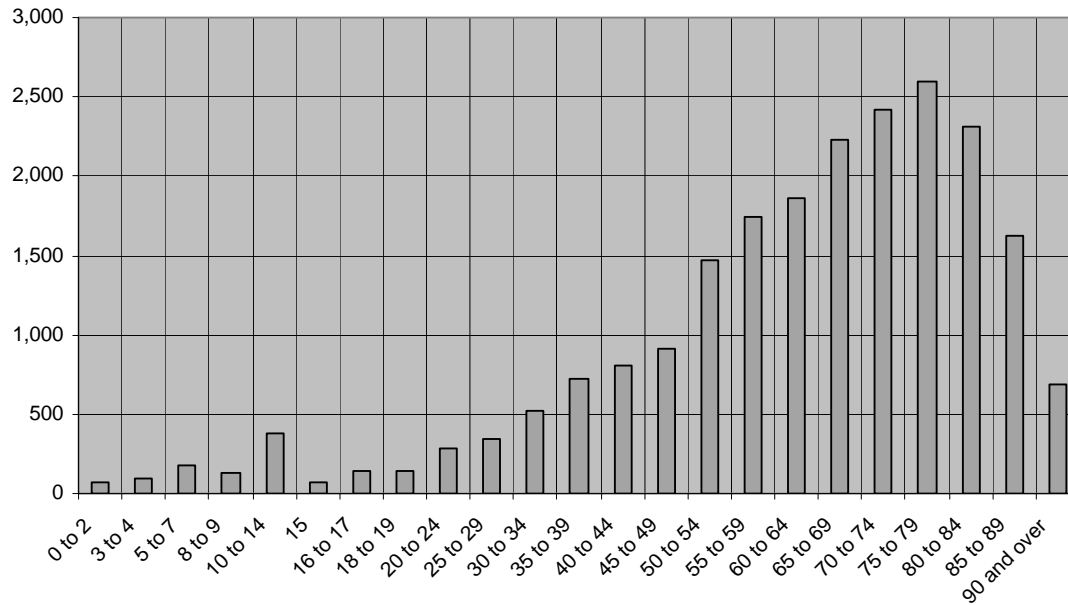
Total Wealden population *projected* at 157,700.

Disability

Census 2001 Limiting Long Term Illness by Age

S016:2 (All people : ALL PEOPLE - Limiting long-term illness)	21,758
S016:14 (All people - aged 0 to 2 : ALL PEOPLE - Limiting long-term illness)	77
S016:26 (All people - aged 3 to 4 : ALL PEOPLE - Limiting long-term illness)	97
S016:38 (All people - aged 5 to 7 : ALL PEOPLE - Limiting long-term illness)	182
S016:50 (All people - aged 8 to 9 : ALL PEOPLE - Limiting long-term illness)	128
S016:62 (All people - aged 10 to 14 : ALL PEOPLE - Limiting long-term illness)	383
S016:74 (All people - aged 15 : ALL PEOPLE - Limiting long-term illness)	77
S016:86 (All people - aged 16 to 17 : ALL PEOPLE - Limiting long-term illness)	148
S016:98 (All people - aged 18 to 19 : ALL PEOPLE - Limiting long-term illness)	144
S016:110 (All people - aged 20 to 24 : ALL PEOPLE - Limiting long-term illness)	279
S016:122 (All people - aged 25 to 29 : ALL PEOPLE - Limiting long-term illness)	338
S016:134 (All people - aged 30 to 34 : ALL PEOPLE - Limiting long-term illness)	516
S016:146 (All people - aged 35 to 39 : ALL PEOPLE - Limiting long-term illness)	725
S016:158 (All people - aged 40 to 44 : ALL PEOPLE - Limiting long-term illness)	807
S016:170 (All people - aged 45 to 49 : ALL PEOPLE - Limiting long-term illness)	913
S016:182 (All people - aged 50 to 54 : ALL PEOPLE - Limiting long-term illness)	1,469
S016:194 (All people - aged 55 to 59 : ALL PEOPLE - Limiting long-term illness)	1,746
S016:206 (All people - aged 60 to 64 : ALL PEOPLE - Limiting long-term illness)	1,858
S016:218 (All people - aged 65 to 69 : ALL PEOPLE - Limiting long-term illness)	2,233
S016:230 (All people - aged 70 to 74 : ALL PEOPLE - Limiting long-term illness)	2,418
S016:242 (All people - aged 75 to 79 : ALL PEOPLE - Limiting long-term illness)	2,593
S016:254 (All people - aged 80 to 84 : ALL PEOPLE - Limiting long-term illness)	2,315
S016:266 (All people - aged 85 to 89 : ALL PEOPLE - Limiting long-term illness)	1,620
S016:278 (All people - aged 90 and over : ALL PEOPLE - Limiting long-term illness)	692

Wealden Equality Scheme 2007-2010



Census 2001 Limiting Long Term Illness by Gender

S016:578 (Females : ALL PEOPLE - Limiting long-term illness)	11,964
S016:290 (Males : ALL PEOPLE - Limiting long-term illness)	9,794

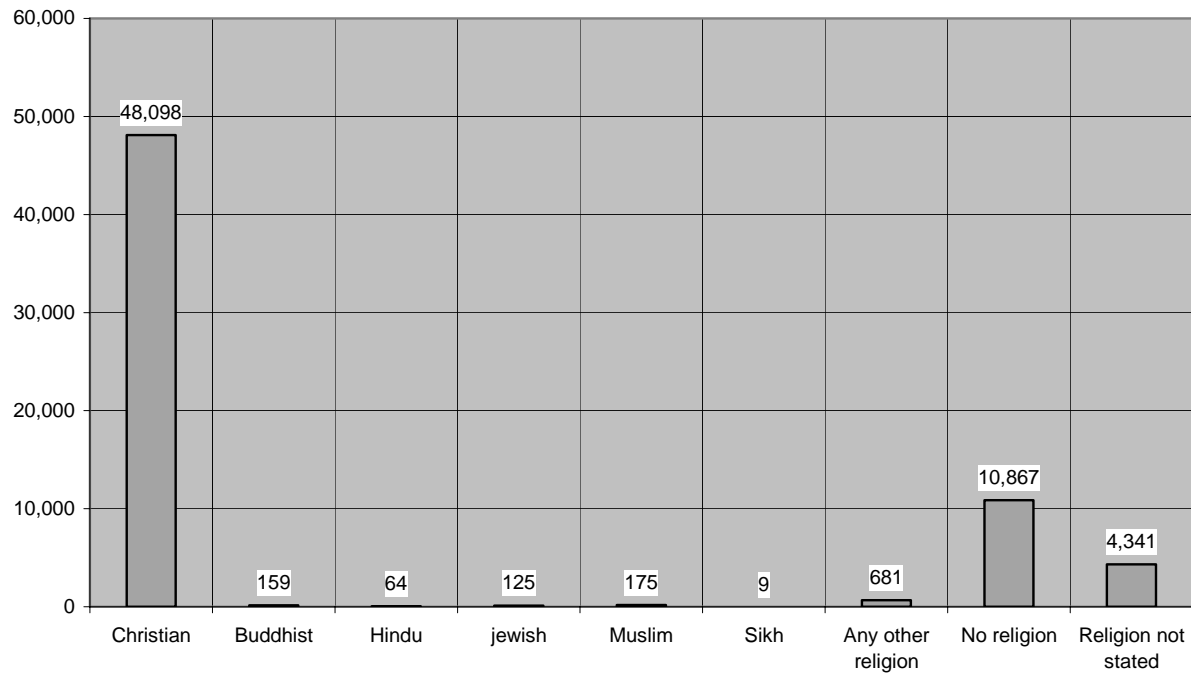
Religion

Census 2001 data from Nomis

Religion	Number of People
S154:2 (ALL PEOPLE : Christian)	48,098
S154:3 (ALL PEOPLE : Buddhist)	159
S154:4 (ALL PEOPLE : Hindu)	64
S154:5 (ALL PEOPLE : Jewish)	125
S154:6 (ALL PEOPLE : Muslim)	175

Wealden Equality Scheme 2007-2010

S154:7 (ALL PEOPLE : Sikh)	9
S154:8 (ALL PEOPLE : Any other religion)	681
S154:9 (ALL PEOPLE : No Religion)	10,867
S154:10 (ALL PEOPLE : Religion not stated)	4,341



Wealden Equality Scheme 2007-2010

Ethnic Groups in Wealden in 2001

Data from Census 2001, provided by East Sussex in Figures

White	Mixed	Asian or Asian British	Black or Black British	Chinese or other ethnic group
137606	902	553	286	634

Wealden Equality Scheme 2007-2010

Census 2001: Population by Ethnic group - Wealden District																	
All people	White British	White Irish	White Other White	Mixed White and Black Caribbean	Mixed White and Black African	Mixed White and Asian	Mixed Other Mixed	Asian or Asian British Indian	Asian or Asian British Pakistani	Asian or Asian British Bangladeshi	Asian or Asian British Other Asian	Black or Black British Black Caribbean	Black or Black British Black African	Black or Black British Other Black	Chinese or other ethnic group Chinese	Chinese or other ethnic group Other Ethnic Group	
140023	133405	968	3262	216	92	358	257	171	49	174	155	96	132	24	378	286	
100%	95.27%	0.69%	2.33%	0.15%	0.07%	0.26%	0.18%	0.12%	0.03%	0.12%	0.11%	0.07%	0.09%	0.02%	0.27%	0.20%	

Census 2001: Population by Ethnic Group – Wealden Wards																	
	All people	White British	White Irish	White Other White	Mixed White and Black Caribbean	Mixed White and Black African	Mixed White and Asian	Mixed Other Mixed	Asian or Asian British Indian	Asian or Asian British Pakistani	Asian or Asian British Bangladeshi	Asian or Asian British Other Asian	Black or Black British Black Caribbean	Black or Black British Black African	Black or Black British Other Black	Chinese or other ethnic group Chinese	Chinese or other ethnic group Other Ethnic Group
Alfriston	2295	2232	8	41	0	0	5	0	0	0	3	3	0	0	0	0	3
	100%	97.25%	0.35%	1.79%	0%	0%	0.22%	0%	0%	0%	0.13%	0.13%	0%	0%	0%	0%	0.13%
Buxted and Maresfield	4970	4752	34	138	3	0	15	3	0	3	5	6	0	4	0	4	3
	100%	95.61%	0.68%	2.78%	0.06%	0%	0.3%	0.06%	0%	0.06%	0.1%	0.12%	0%	0.08%	0%	0.08%	0.06%
Chiddingly and	2729	2626	25	49	3	0	11	0	0	3	0	4	0	3	0	0	5

Wealden Equality Scheme 2007-2010

Census 2001: Population by Ethnic Group – Wealden Wards																	
	All people	White British	White Irish	White Other White	Mixed White and Black Caribbean	Mixed White and Black African	Mixed White and Asian	Mixed Other Mixed	Asian or Asian British Indian	Asian or Asian British Pakistani	Asian or Asian British Bangladeshi	Asian or Asian British Other Asian	Black or Black British Black Caribbean	Black or Black British Black African	Black or Black British Other Black	Chinese or other ethnic group Chinese	Chinese or other ethnic group Other Ethnic Group
East Hoathly	100%	96.23%	0.92%	1.8%	0.11%	0%	0.4%	0%	0%	0.11%	0%	0.15%	0%	0.11%	0%	0%	0.18%
Cross in Hand/Five Ashes	2299	2180	23	44	3	0	3	3	7	3	10	14	0	3	0	3	3
	100%	94.82%	1%	1.91%	0.13%	0%	0.13%	0.13%	0.3%	0.13%	0.43%	0.61%	0%	0.13%	0%	0.13%	0.13%
Crowborough East	5243	4877	34	218	11	3	15	18	9	0	26	0	8	3	0	8	13
	100%	93.02%	0.65%	4.16%	0.21%	0.06%	0.29%	0.34%	0.17%	0	0.5%	0	0.15%	0.06%	0	0.15%	0.25%
Crowborough Jarvis Brook	2695	2552	14	44	11	3	3	10	3	3	14	3	3	3	3	21	5
	100%	94.69%	0.52%	1.63%	0.41%	0.11%	0.11%	0.37%	0.11%	0.11%	0.52%	0.11%	0.11%	0.11%	0.11%	0.78%	0.19%
Crowborough North	5052	4870	26	87	4	5	7	4	3	8	9	3	0	6	0	17	3
	100%	96.4%	0.51%	1.72%	0.08%	0.1%	0.14%	0.08%	0.06%	0.16%	0.18%	0.06%	0%	0.12%	0%	0.34%	0.06%
Crowborough St. Johns	2191	2100	11	59	0	0	4	6	4	0	0	0	3	0	0	4	0
	100%	95.85%	0.5%	2.69%	0%	0%	0.18%	0.27%	0.18%	0%	0%	0%	0.14%	0%	0%	0.18%	0%
Crowborough West	4756	4550	32	102	10	0	7	10	5	0	0	5	7	0	0	14	14
	100%	95.67%	0.67%	2.14%	0.21%	0%	0.15%	0.21%	0.11%	0%	0%	0.11%	0.15%	0%	0%	0.29%	0.29%
Danehill/Fletching/Nutley	5050	4684	41	206	11	3	14	13	9	0	7	3	0	15	3	27	14
	100%	92.75%	0.81%	4.08%	0.22%	0.06%	0.28%	0.26%	0.18%	0%	0.14%	0.06%	0%	0.3%	0.06%	0.53%	0.28%
East Dean	2163	2079	13	42	0	0	6	4	4	3	0	5	0	0	0	3	4
	100%	96.12%	0.6%	1.94%	0%	0%	0.28%	0.18%	0.18%	0.14%	0%	0.23%	0%	0%	0%	0.14%	0.18%
Forest Row	5199	4518	48	454	14	4	35	20	13	6	6	8	3	3	0	30	37
	100%	86.9%	0.92%	8.73%	0.27%	0.08%	0.67%	0.38%	0.25%	0.12%	0.12%	0.15%	0.06%	0.06%	0%	0.58%	0.71%

Wealden Equality Scheme 2007-2010

Census 2001: Population by Ethnic Group – Wealden Wards																	
	All people	White British	White Irish	White Other White	Mixed White and Black Caribbean	Mixed White and Black African	Mixed White and Asian	Mixed Other Mixed	Asian or Asian British Indian	Asian or Asian British Pakistani	Asian or Asian British Bangladeshi	Asian or Asian British Other Asian	Black or Black British Black Caribbean	Black or Black British Black African	Black or Black British Other Black	Chinese or other ethnic group Chinese	Chinese or other ethnic group Other Ethnic Group
Framfield	2545	2462	13	51	0	0	4	3	4	0	0	0	0	0	0	3	5
	100%	96.74%	0.51%	2%	0%	0%	0.16%	0.12%	0.16%	0%	0%	0%	0%	0%	0%	0.12%	0.2%
Frant/Withyham	4789	4535	36	131	4	6	6	15	19	3	0	4	0	11	0	6	13
	100%	94.7%	0.75%	2.74%	0.08%	0.13%	0.13%	0.31%	0.4%	0.06%	0%	0.08%	0%	0.23%	0%	0.13%	0.27%
Hailsham Central and North	5495	5305	47	66	10	3	11	7	6	0	0	7	5	5	0	13	10
	100%	96.54%	0.86%	1.2%	0.18%	0.05%	0.2%	0.13%	0.11%	0%	0%	0.13%	0.09%	0.09%	0%	0.24%	0.18%
Hailsham East	2768	2661	13	23	7	13	13	0	3	0	17	11	3	4	0	0	0
	100%	96.13%	0.47%	0.83%	0.25%	0.47%	0.47%	0%	0.11%	0%	0.61%	0.4%	0.11%	0.14%	0%	0%	0%
Hailsham South and West	8331	7923	68	167	24	5	21	14	5	0	25	15	10	8	3	23	20
	100%	95.1%	0.82%	2%	0.29%	0.06%	0.25%	0.17%	0.06%	0%	0.3%	0.18%	0.12%	0.1%	0.04%	0.28%	0.24%
Hartfield	2526	2368	14	99	0	0	14	12	3	0	0	5	0	0	3	3	5
	100%	93.75%	0.55%	3.92%	0%	0%	0.55%	0.48%	0.12%	0%	0%	0.2%	0%	0%	0.12%	0.12%	0.2%
Heathfield East	2349	2255	11	55	0	0	10	3	3	0	0	0	6	0	3	0	3
	100%	96%	0.47%	2.34%	0%	0%	0.43%	0.13%	0.13%	0%	0%	0%	0.26%	0%	0.13%	0%	0.13%
Heathfield North and Central	7725	7467	32	104	21	8	15	8	7	8	8	3	4	6	3	27	4
	100%	96.66%	0.41%	1.35%	0.27%	0.1%	0.19%	0.1%	0.09%	0.1%	0.1%	0.04%	0.05%	0.08%	0.04%	0.35%	0.05%
Hellingly	4973	4786	32	81	5	6	21	9	5	0	0	13	3	5	3	0	4
	100%	96.24%	0.64%	1.63%	0.1%	0.12%	0.42%	0.18%	0.1%	0%	0%	0.26%	0.06%	0.1%	0.06%	0%	0.08%

Wealden Equality Scheme 2007-2010

Census 2001: Population by Ethnic Group – Wealden Wards																	
	All people	White British	White Irish	White Other White	Mixed White and Black Caribbean	Mixed White and Black African	Mixed White and Asian	Mixed Other Mixed	Asian or Asian British Indian	Asian or Asian British Pakistani	Asian or Asian British Bangladeshi	Asian or Asian British Other Asian	Black or Black British Black Caribbean	Black or Black British Black African	Black or Black British Other Black	Chinese or other ethnic group Chinese	Chinese or other ethnic group Other Ethnic Group
Herstmonceux	2531	2435	20	50	5	5	3	0	4	0	3	0	3	3	0	0	0
	100%	96.21%	0.79%	1.98%	0.2%	0.2%	0.12%	0%	0.16%	0%	0.12%	0%	0.12%	0.12%	0%	0%	0%
Horam	2580	2507	15	35	0	0	4	3	0	0	3	0	3	0	0	7	3
	100%	97.17%	0.58%	1.36%	0%	0%	0.16%	0.12%	0%	0%	0.12%	0%	0.12%	0%	0%	0.27%	0.12%
Mayfield	2675	2431	21	107	0	0	16	10	3	0	0	3	0	16	0	51	17
	100%	90.88%	0.79%	4%	0%	0%	0.6%	0.37%	0.11%	0%	0%	0.11%	0%	0.6%	0%	1.91%	0.64%
Ninfield and Hooe with Wartling	2325	2266	13	35	0	0	5	6	0	0	0	0	0	0	0	0	0
	100%	97.46%	0.56%	1.51%	0%	0%	0.22%	0.26%	0%	0%	0%	0%	0%	0%	0%	0%	0%
Pevensey and Westham	8545	8197	77	119	20	7	13	20	6	5	3	13	11	13	0	11	30
	100%	95.93%	0.9%	1.39%	0.23%	0.08%	0.15%	0.23%	0.07%	0.06%	0.04%	0.15%	0.13%	0.15%	0%	0.13%	0.35%
Polegate North	4715	4566	43	49	7	4	9	6	3	0	4	3	3	0	0	12	6
	100%	96.84%	0.91%	1.04%	0.15%	0.08%	0.19%	0.13%	0.06%	0%	0.08%	0.06%	0.06%	0%	0%	0.25%	0.13%
Polegate South	2249	2182	17	22	3	0	3	6	4	0	0	0	4	0	0	4	4
	100%	97.02%	0.76%	0.98%	0.13%	0%	0.13%	0.27%	0.18%	0%	0%	0%	0.18%	0%	0%	0.18%	0.18%
Rotherfield	2329	2238	15	44	6	0	7	7	3	0	0	3	0	0	0	3	3
	100%	96.09%	0.64%	1.89%	0.26%	0%	0.3%	0.3%	0.13%	0%	0%	0.13%	0%	0%	0%	0.13%	0.13%
Uckfield Central	2794	2690	19	35	5	0	8	4	4	5	3	3	3	0	0	12	3
	100%	96.28%	0.68%	1.25%	0.18%	0%	0.29%	0.14%	0.14%	0.18%	0.11%	0.11%	0.11%	0%	0%	0.43%	0.11%
Uckfield New Town	2555	2459	11	52	10	0	9	4	4	0	0	0	0	3	0	0	3
	100%	96.24%	0.43%	2.04%	0.39%	0%	0.35%	0.16%	0.16%	0%	0%	0%	0%	0.12%	0%	0%	0.12%

Wealden Equality Scheme 2007-2010

Census 2001: Population by Ethnic Group – Wealden Wards																	
	All people	White British	White Irish	White Other White	Mixed White and Black Caribbean	Mixed White and Black African	Mixed White and Asian	Mixed Other Mixed	Asian or Asian British Indian	Asian or Asian British Pakistani	Asian or Asian British Bangladeshi	Asian or Asian British Other Asian	Black or Black British Black Caribbean	Black or Black British Black African	Black or Black British Other Black	Chinese or other ethnic group Chinese	Chinese or other ethnic group Other Ethnic Group
Uckfield North	5368	5166	31	92	10	0	11	6	4	0	27	6	4	3	0	5	3
	100%	96.24%	0.58%	1.71%	0.19%	0%	0.2%	0.11%	0.07%	0%	0.5%	0.11%	0.07%	0.06%	0%	0.09%	0.06%
Uckfield Ridgewood	2978	2853	21	44	0	5	6	7	15	3	5	0	0	3	0	13	3
	100%	95.8%	0.71%	1.48%	0%	0.17%	0.2%	0.24%	0.5%	0.1%	0.17%	0%	0%	0.1%	0%	0.44%	0.1%
Wadhurst	5059	4690	46	203	5	3	9	4	3	0	0	5	4	14	0	43	30
	100%	92.71%	0.91%	4.01%	0.1%	0.06%	0.18%	0.08%	0.06%	0%	0%	0.1%	0.08%	0.28%	0%	0.85%	0.59%
Willingdon	7181	6943	44	114	3	4	17	13	12	0	0	8	0	0	0	9	14
	100%	96.69%	0.61%	1.59%	0.04%	0.06%	0.24%	0.18%	0.17%	0%	0%	0.11%	0%	0%	0%	0.13%	0.19%

Census 2001: Population by Religion - Wealden District

Wealden Equality Scheme 2007-2010

All people	Christian	Buddhist	Hindu	Jewish	Muslim	Sikh	Other	No religion	Religion not stated
140023									
100%	77.2%	0.2%	0.1%	0.2%	0.4%	0.0%	0.7%	13.9%	7.4%

Family Life

Data from Census 2001, NOMIS
Households

Household Type

Wealden

S053:1 (All Households : ALL HOUSEHOLDS)	58,267
S053:69 (One family and no others : ALL HOUSEHOLDS)	39,981
S053:103 (One family and no others - Married couple households : ALL HOUSEHOLDS)	24,136
S053:171 (One family and no others - Cohabiting Couple Households : ALL HOUSEHOLDS)	4,214
S053:239 (One family and no others - Lone Parent Households : ALL HOUSEHOLDS)	3,763
S053:290 (Other households : ALL HOUSEHOLDS)	2,632

