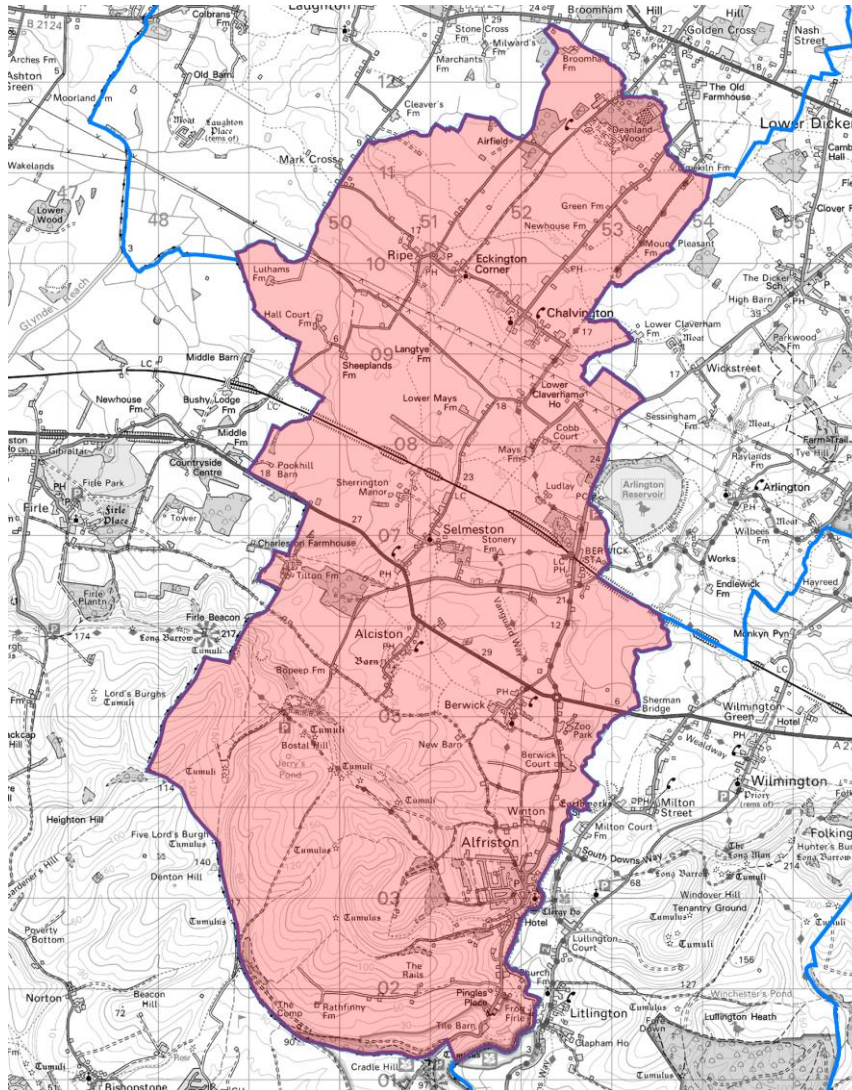


Alfriston Ward profile

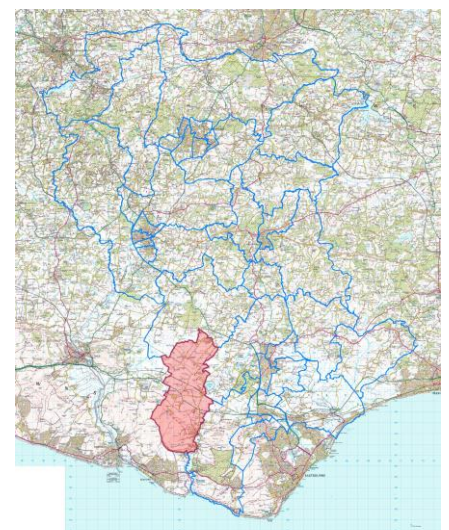
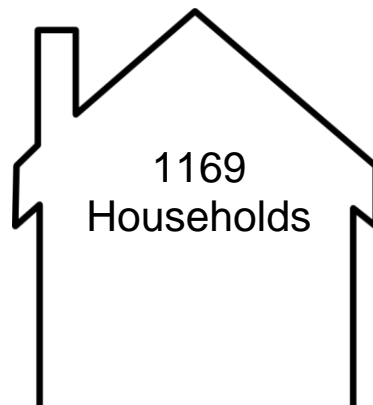
(Data taken from the 2011 ONS Census, unless otherwise stated)



Alfriston has an area of 3,977.99 hectares which represents 4.76% of the total local authority area of Wealden.



Population of 2321



© Crown Copyright and database right.
Ordnance Survey 100018692.

Alfriston has a resident population of 2,321 which represents 1.56% of the Wealden local authority resident population.

This profile has been produced by the WDC Policy Team (May 2014).



policy@wealden.gov.uk

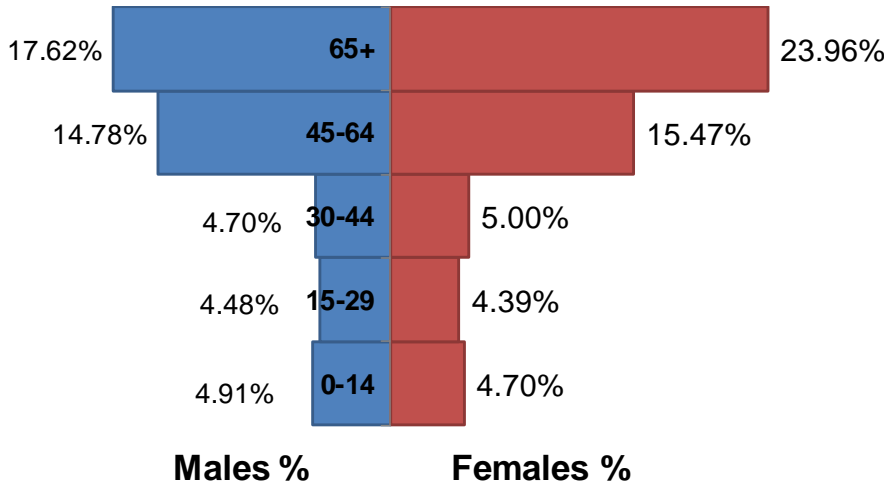


01323 443186

Who lives in Alfriston?

(Data taken from the 2011 ONS Census, unless otherwise stated)

Population by Age and Gender

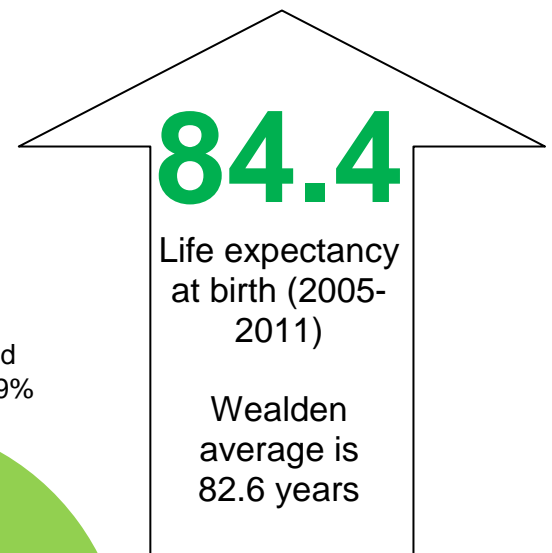
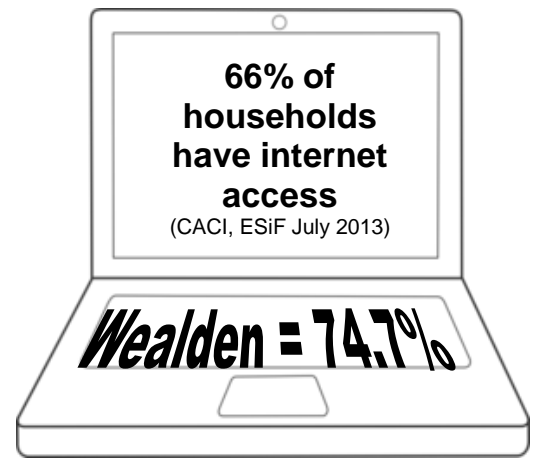
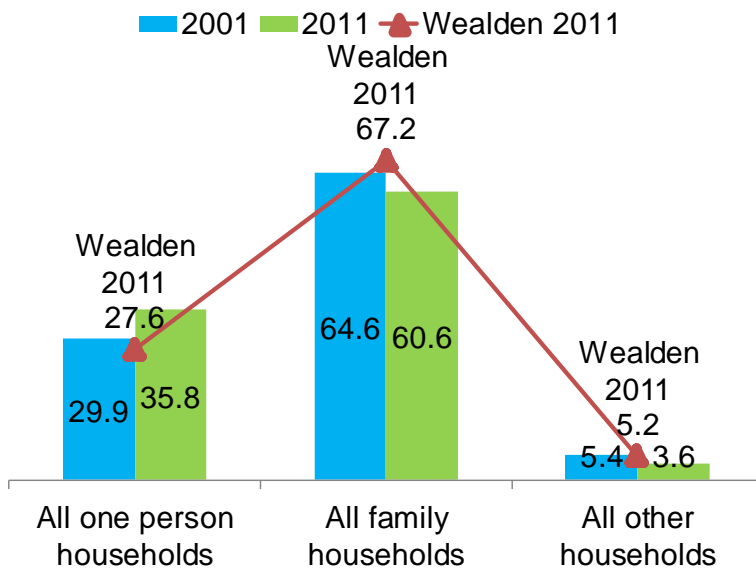


The largest age band is 65+.

The average* age of the population is 55. This is older than the average of 44 across the whole of Wealden.

*Mean

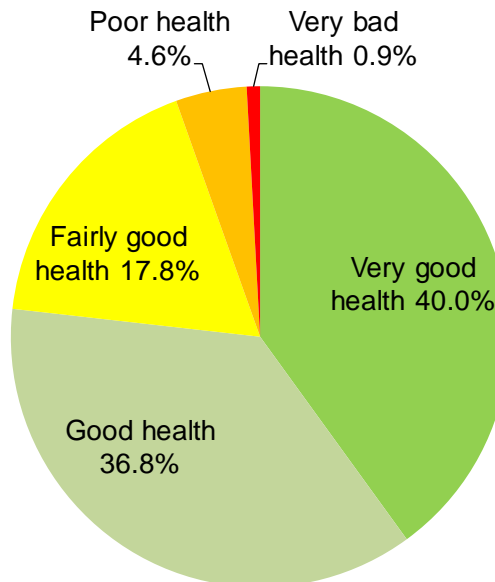
Household Composition in 2001 and 2011 (%)



80

Disability Living Allowance Claimants

(Work and Pensions Longitudinal Study, Feb 2013)



Alfriston's ranking for the number of residents self assessed as in **very bad health** is 16 (out of 35) within Wealden.



policy@wealden.gov.uk



01233 443186

Education and the Economy in Alfriston

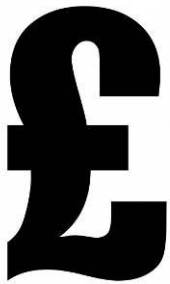
(Data taken from the 2011 ONS Census, unless otherwise stated)



The highest level of educational qualification achieved by the biggest group of Alfriston residents (32.8%) is Level 4 and above.

This is significantly higher compared with the 28.9% of residents aged 16 and over in Wealden with Level 4 qualifications and above.

Median household income (£)



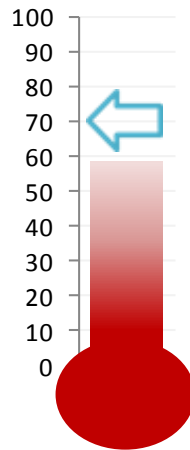
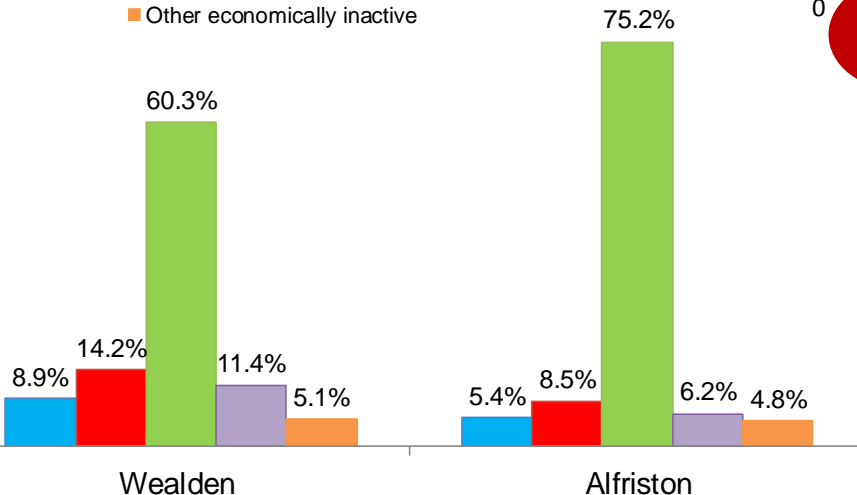
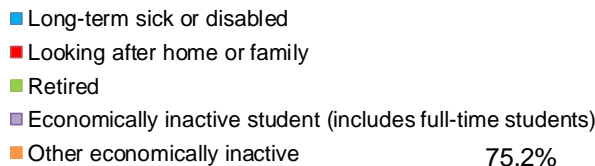
31.5% of households in Alfriston are living in **poverty***

*earning below 60% of GB median income.

Economic Activity

11 of the lone parent households in Alfriston are not in employment.

Economically Inactive



58.8% of 16 – 74 year olds in Alfriston are **economically active**

(Wealden = 70.1%)

Compared to Wealden, Alfriston has

1. Higher % of retired people.
2. Slightly smaller % of economically inactive students and long-term sick or disabled



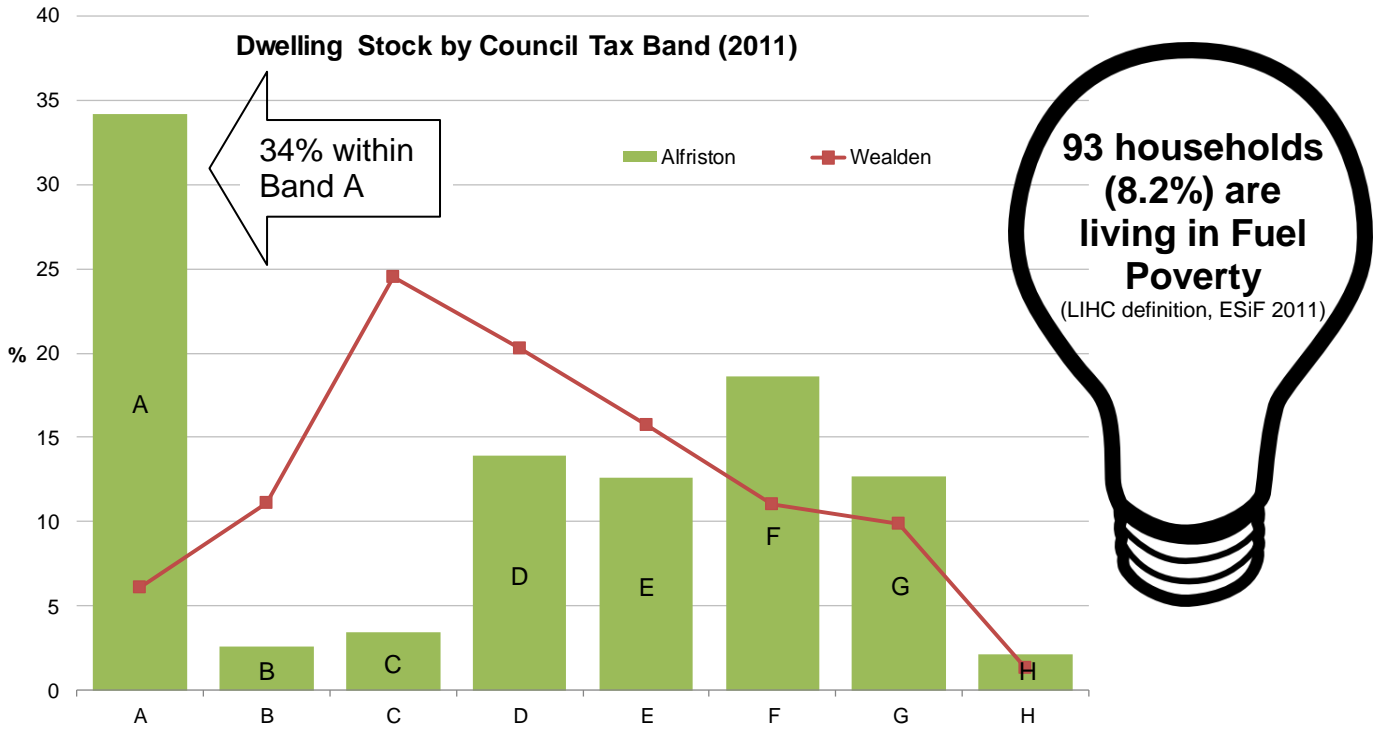
policy@wealden.gov.uk



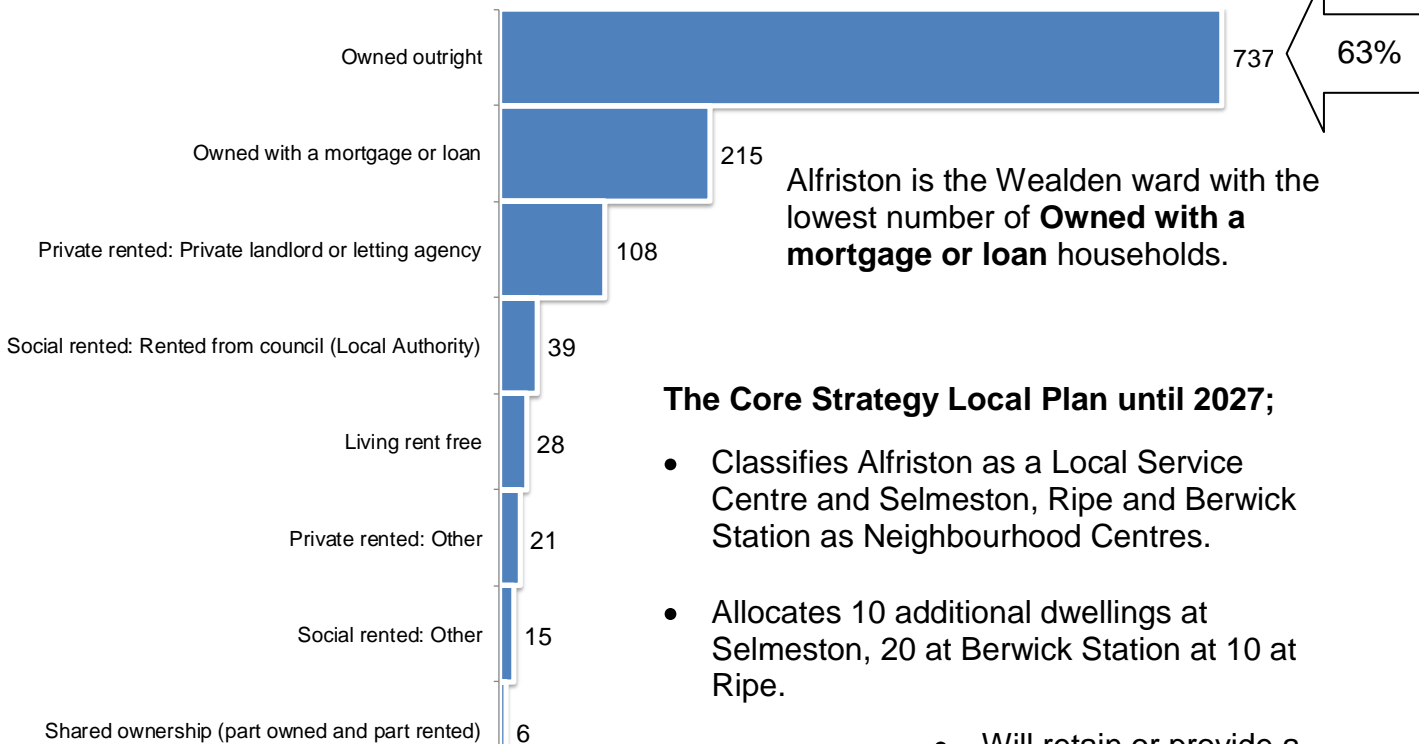
01233 443186

Housing and Development in Alfriston

(Data taken from the 2011 ONS Census, unless otherwise stated)

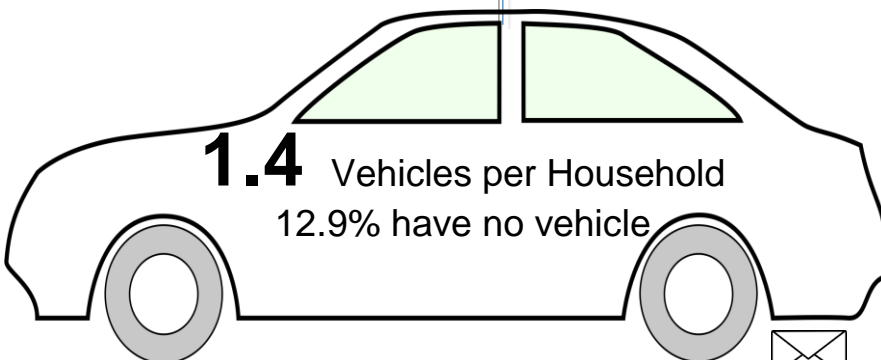


Household Tenure



The Core Strategy Local Plan until 2027;

- Classifies Alfriston as a Local Service Centre and Selmeston, Ripe and Berwick Station as Neighbourhood Centres.
- Allocates 10 additional dwellings at Selmeston, 20 at Berwick Station at 10 at Ripe.
- Will retain or provide a development boundary at Alfriston and remove the development boundary at Berwick Station.



policy@wealden.gov.uk



01323 443186