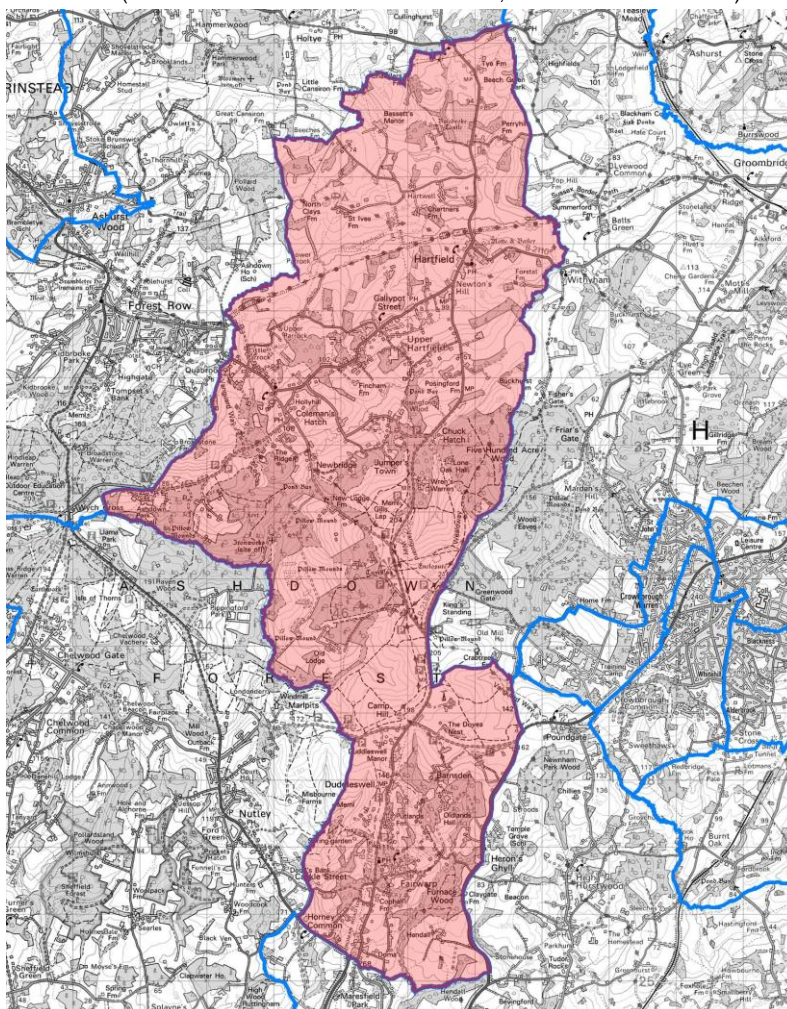


Hartfield Ward profile

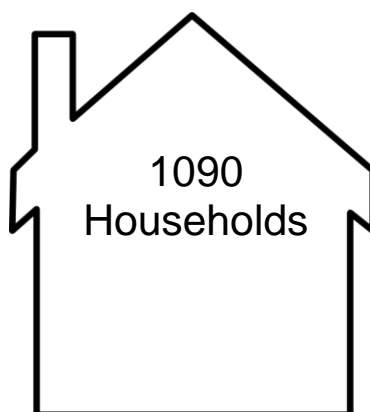
(Data taken from the 2011 ONS Census, unless otherwise stated)



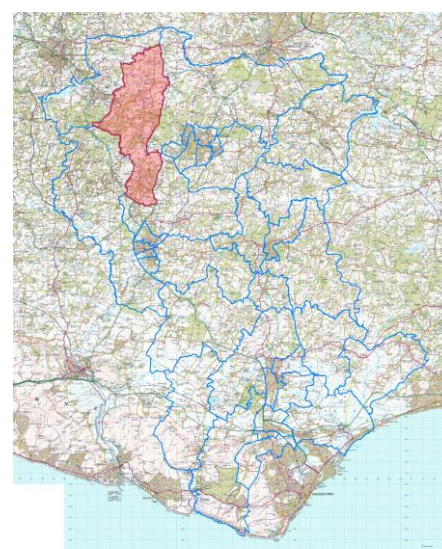
Hartfield has an area of 4,616.43 hectares which represents 5.52% of the total local authority area of Wealden.



Population of 2639



Hartfield has a resident population of 2,639 which represents 1.77% of the Wealden local authority resident population.



© Crown Copyright and database right.
Ordnance Survey 100018692.

This profile has been produced by the WDC Policy Team (May 2014).



policy@wealden.gov.uk

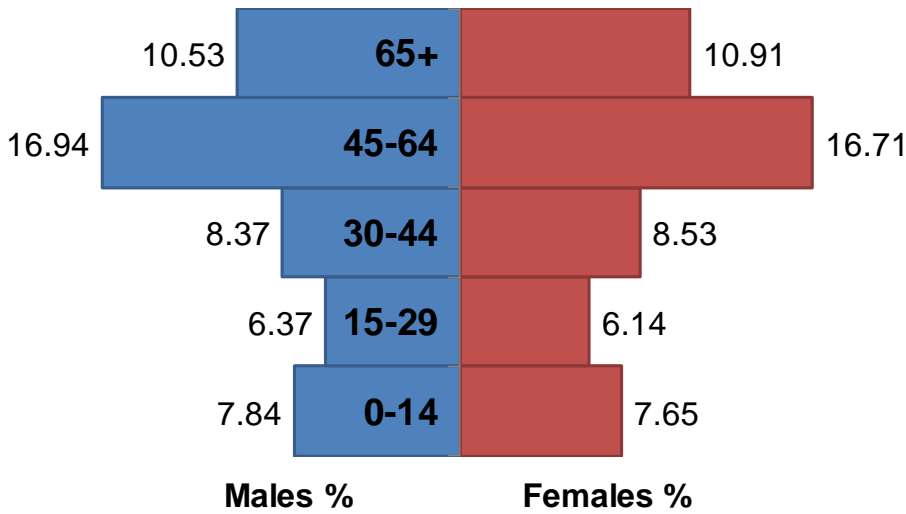


01323 443186

Who lives in Hartfield?

(Data taken from the 2011 ONS Census, unless otherwise stated)

Population by Age and Gender

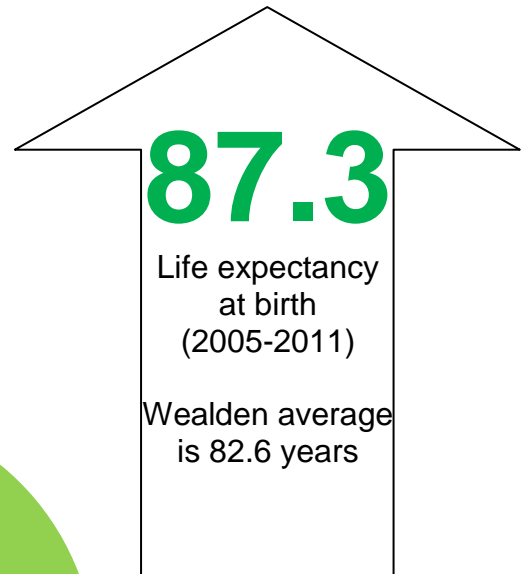
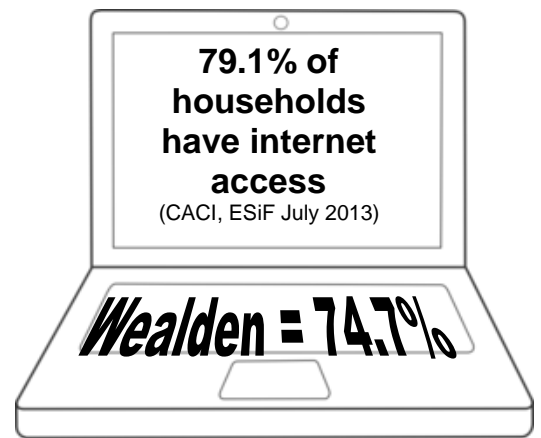
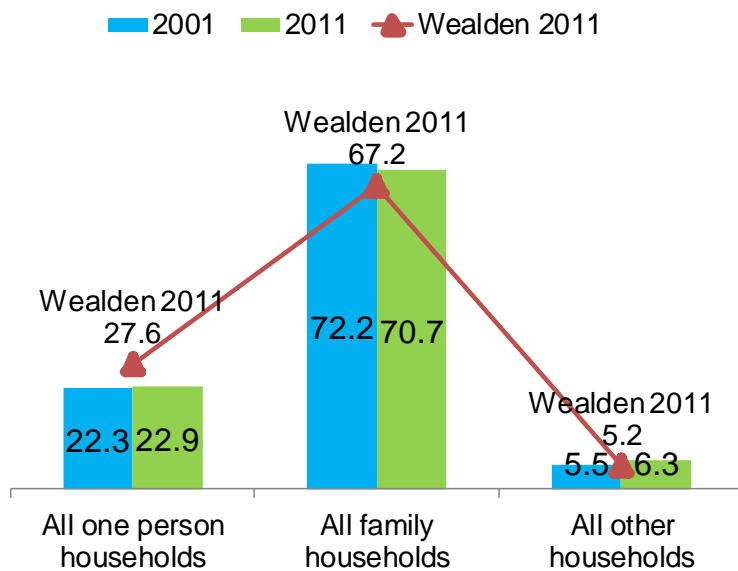


The largest age band is Age 45 to 64.

The average* age of the population is 45. This is older than the average* of 44 for the whole of Wealden.

*Mean

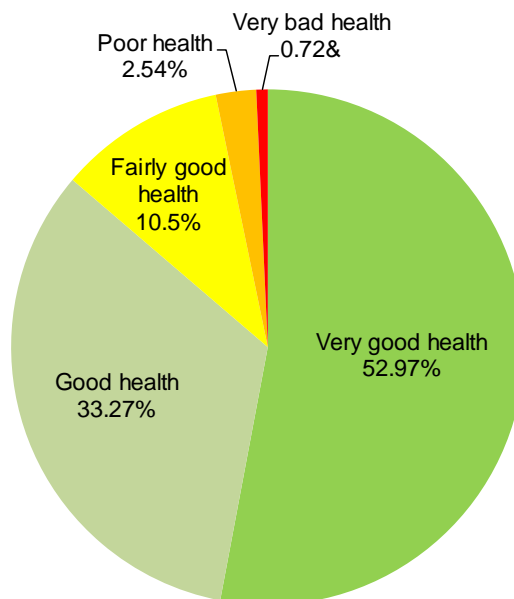
Household Composition in 2001 and 2011 (%)



45

Disability Living Allowance Claimants

(Work and Pensions Longitudinal Study, Feb 2013)



Hartfield ranking for the number of residents self assessed as in **very bad health** is 23 (out of 35) within Wealden.



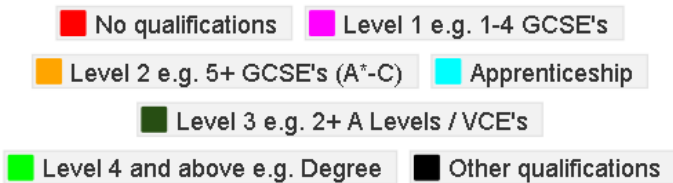
policy@wealden.gov.uk



01323 443186

Education and the Economy in Hartfield

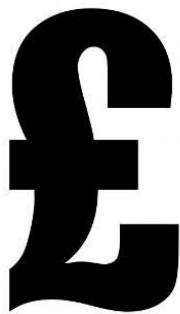
(Data taken from the 2011 ONS Census, unless otherwise stated)



The highest level of educational qualification achieved by the biggest group of Hartfield residents (37.9%) is Level 4 qualifications and above.

This is higher compared with the 28.9% of residents aged 16 and over in Wealden with Level 4 qualifications and above.

Median household income (£)



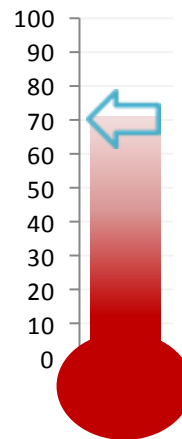
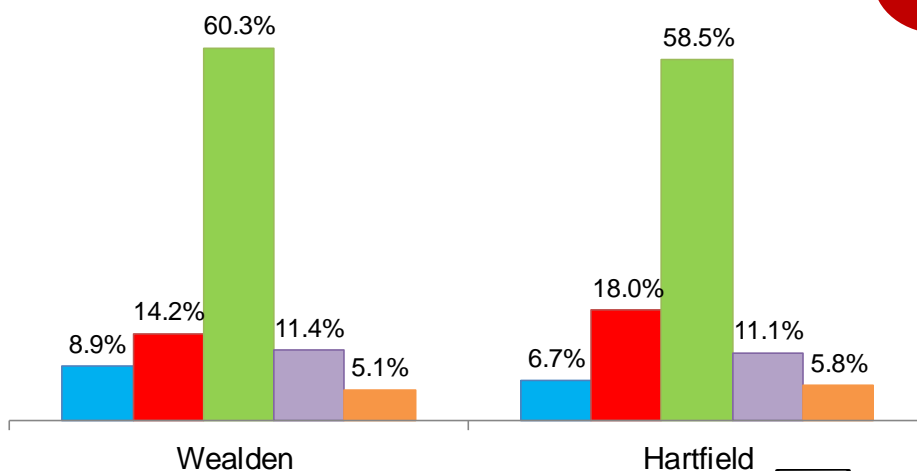
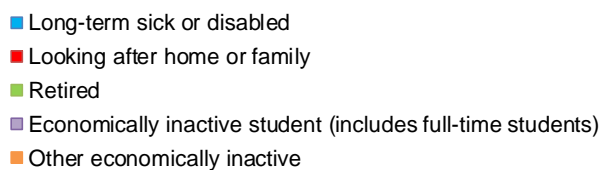
19.2% of households in Hartfield are living in **poverty***

*earning below 60% of GB median income.

Economic Activity

10 of the lone parent households in Hartfield are not in employment.

Economically Inactive



71% of 16 – 74 year olds in Hartfield are **economically active** (Wealden = 70.1%)

Compared to Wealden, Hartfield has a

1. Smaller % of Retired and Long-term sick or disabled.
2. Higher % of Looking after home or family.



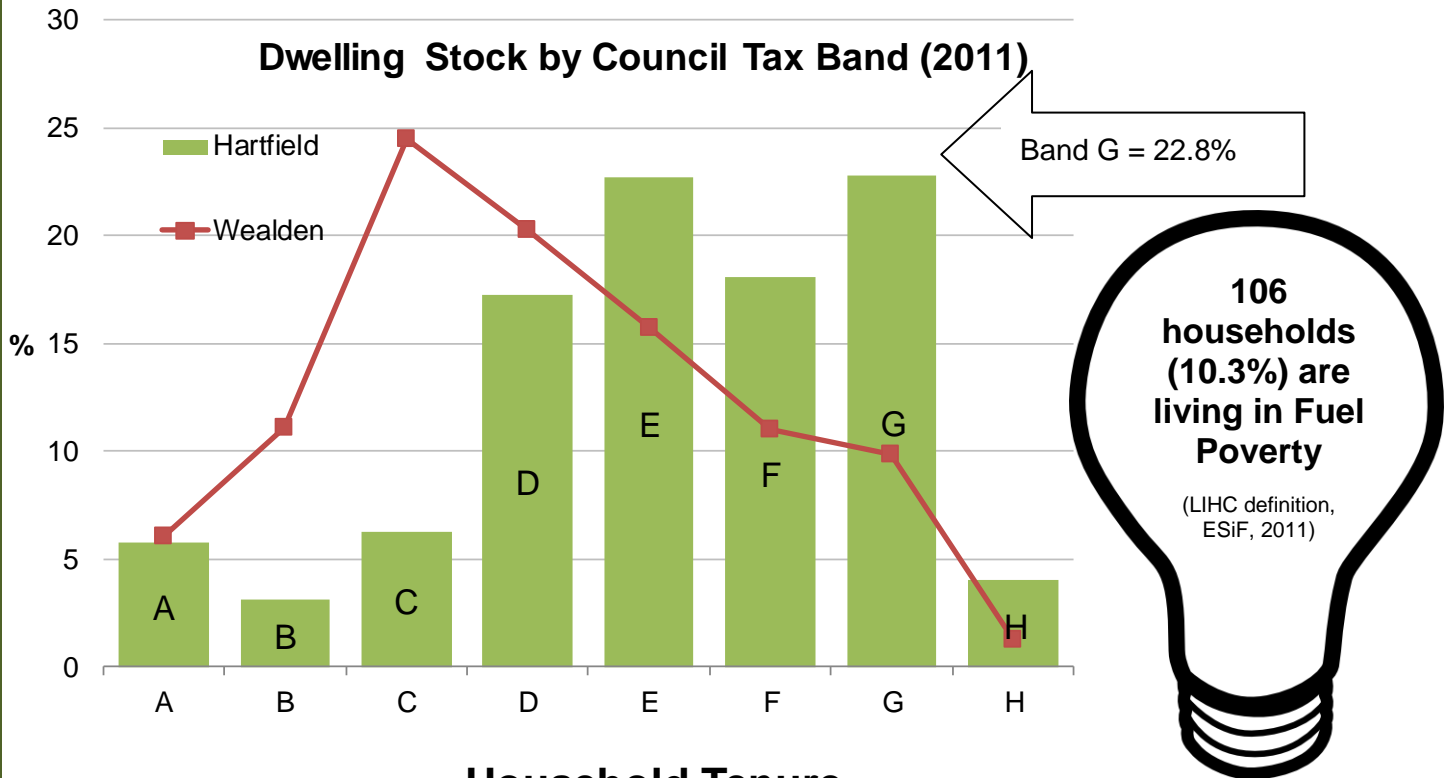
policy@wealden.gov.uk



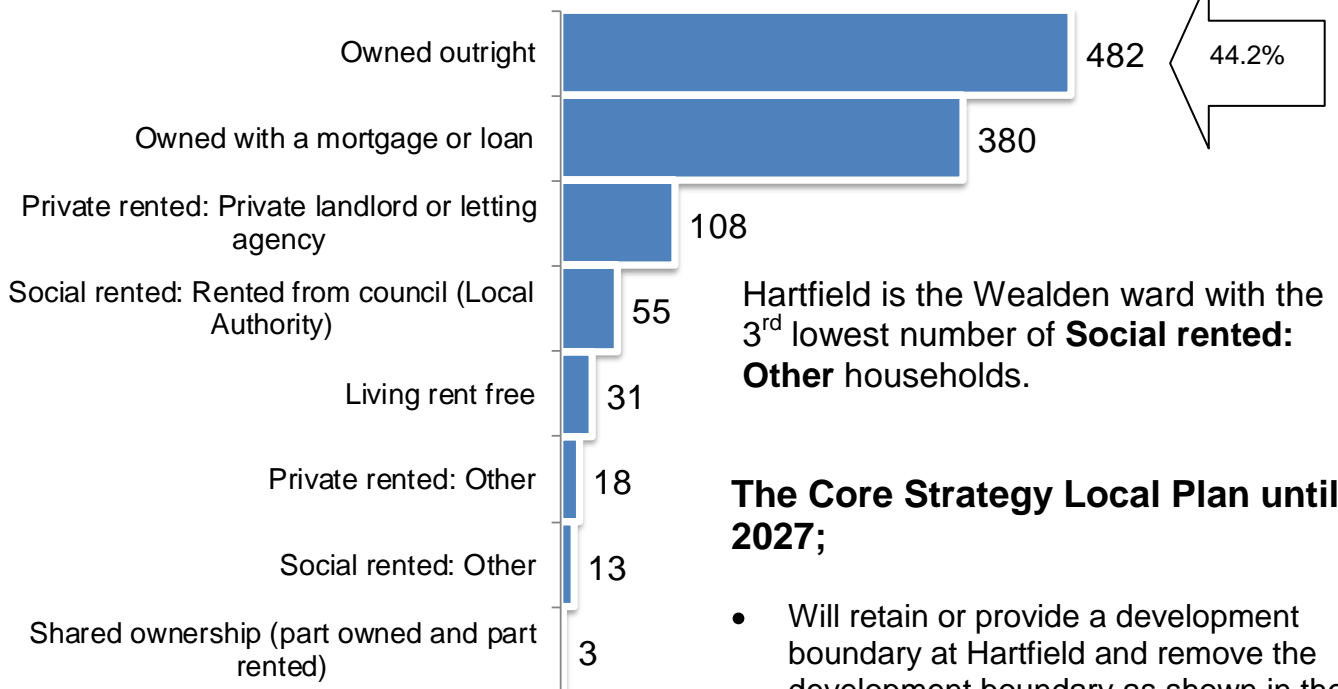
01323 443186

Housing and Development in Hartfield

(Data taken from the 2011 ONS Census, unless otherwise stated)

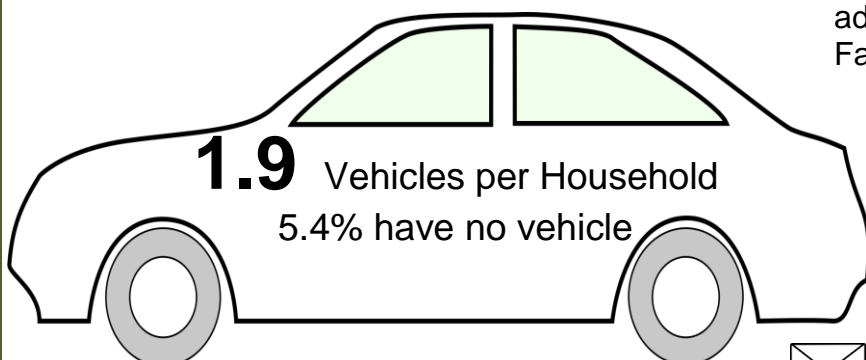


Household Tenure



The Core Strategy Local Plan until 2027;

- Will retain or provide a development boundary at Hartfield and remove the development boundary as shown in the adopted Wealden Local Plan 1998 at Fairwarp.
- Classifies Hartfield as a Local Service Centre.



policy@wealden.gov.uk



01323 443186