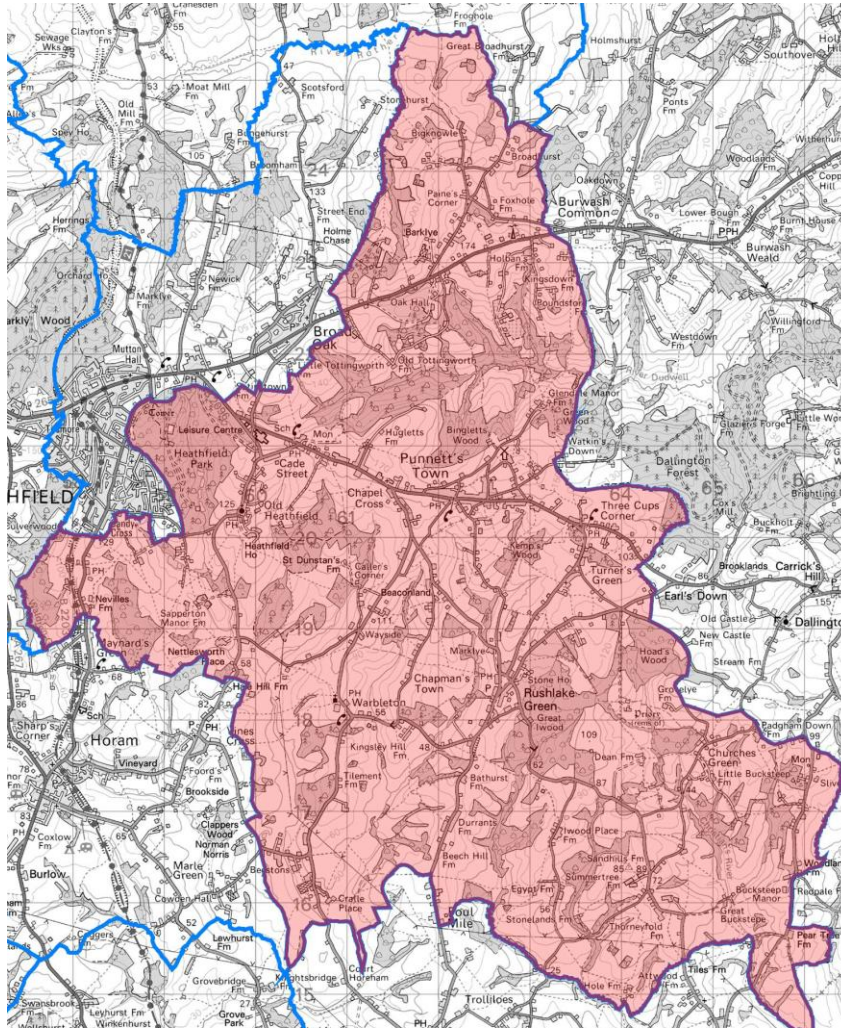


# Heathfield East Ward profile

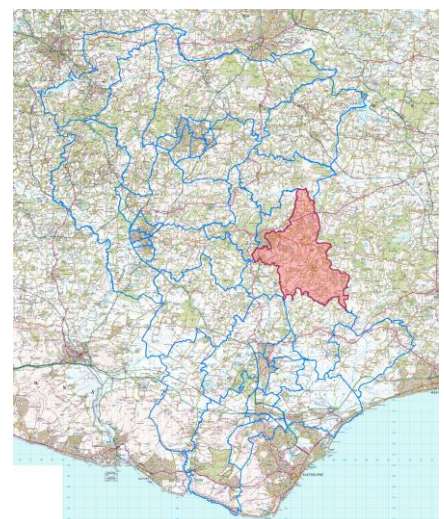
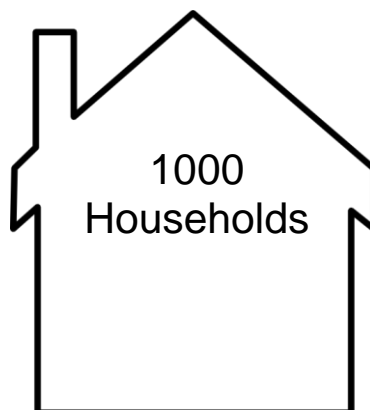
(Data taken from the 2011 ONS Census, unless otherwise stated)



Heathfield East has an area of 4,349.56 hectares which represents 5.20% of the total local authority area of Wealden.



Population of 2523



© Crown Copyright and database right.  
Ordnance Survey 100018692.

Heathfield East has a resident population of 2,523 which represents 1.69% of the Wealden local authority resident population.

This profile has been produced by the WDC Policy Team (May 2014).



[policy@wealden.gov.uk](mailto:policy@wealden.gov.uk)

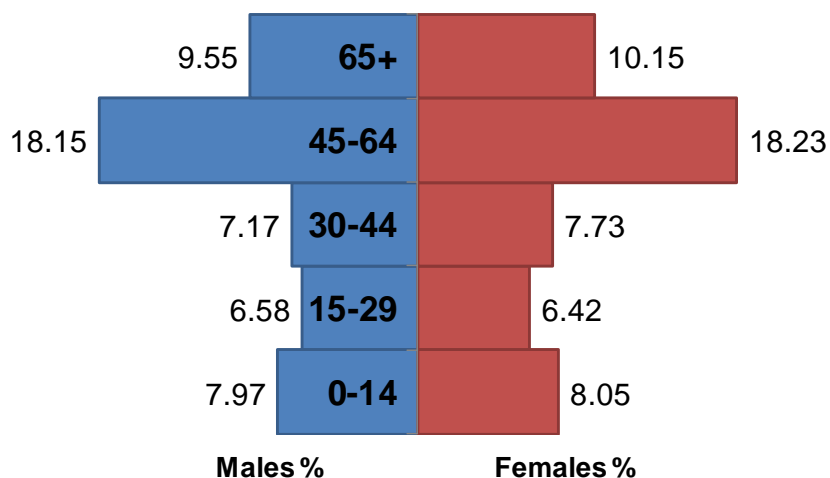


01323 443186

# Who lives in Heathfield East?

(Data taken from the 2011 ONS Census, unless otherwise stated)

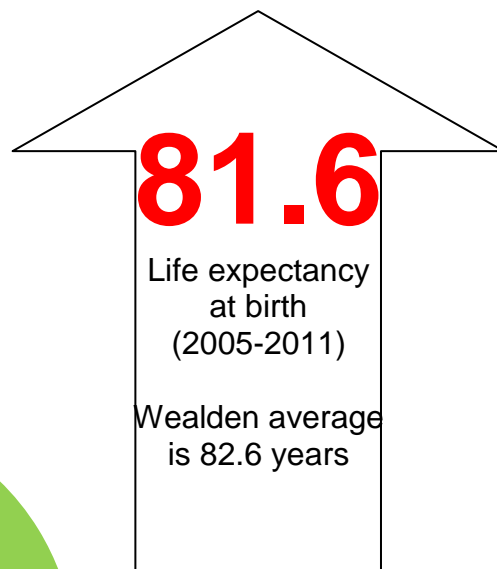
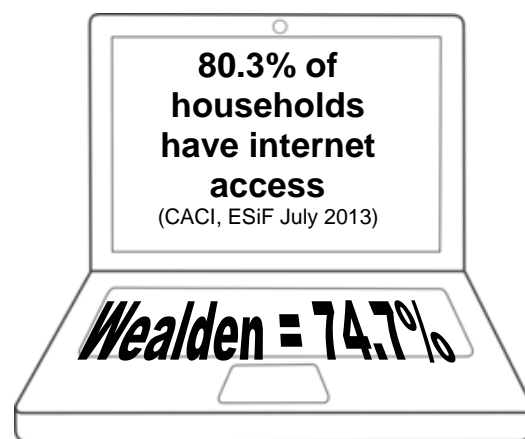
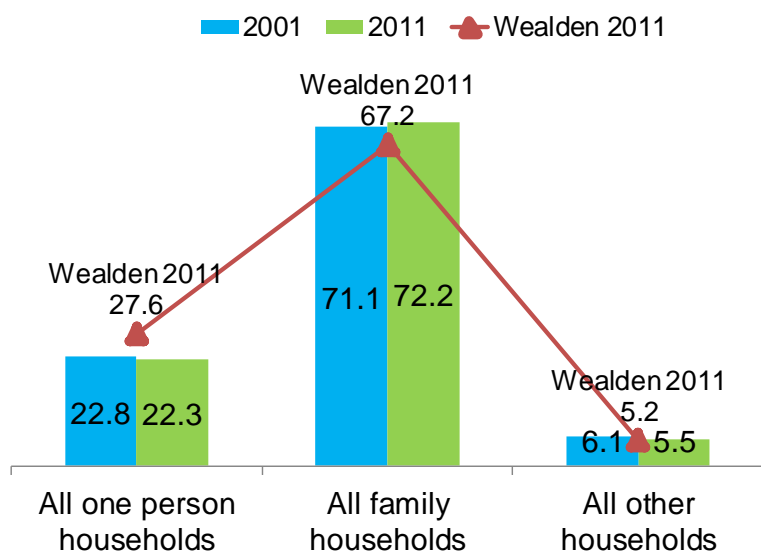
## Population by Age and Gender



The largest age band is Age 45 to 64.

The average\* age of the population is 44. This is equal to the average\* of 44 for the whole of Wealden.  
\*Mean

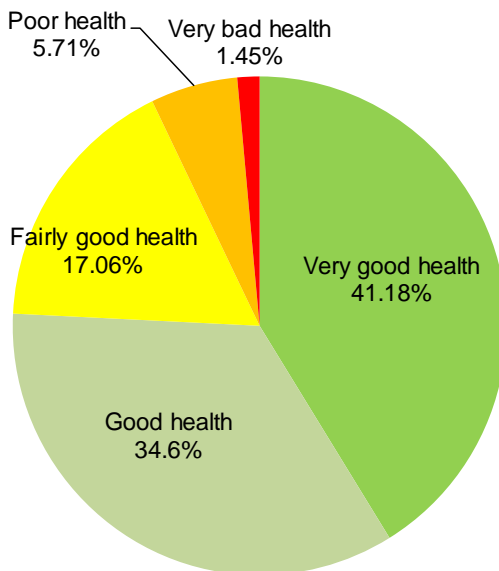
## Household Composition in 2001 and 2011 (%)



**70**

## Disability Living Allowance Claimants

(Work and Pensions Longitudinal Study, Feb 2013)



Heathfield East's ranking for the number of residents self assessed as in **very bad health** is 20 (out of 35) within Wealden.



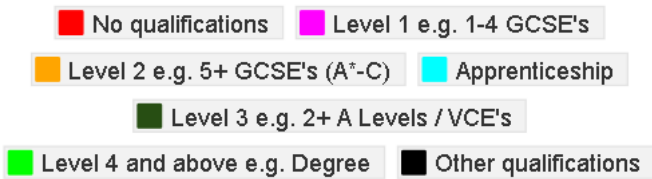
[policy@wealden.gov.uk](mailto:policy@wealden.gov.uk)



01323 443186

# Education and the Economy in Heathfield East

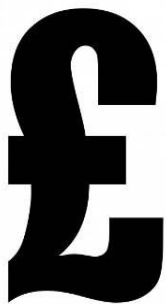
(Data taken from the 2011 ONS Census, unless otherwise stated)



The highest level of educational qualification achieved by the biggest group of Heathfield East residents (33.5%) is Level 4 qualifications and above.

This is higher compared with the 28.9% of residents aged 16 and over in Wealden with Level 4 qualifications and above.

## Median household income (£)



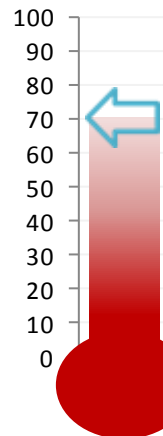
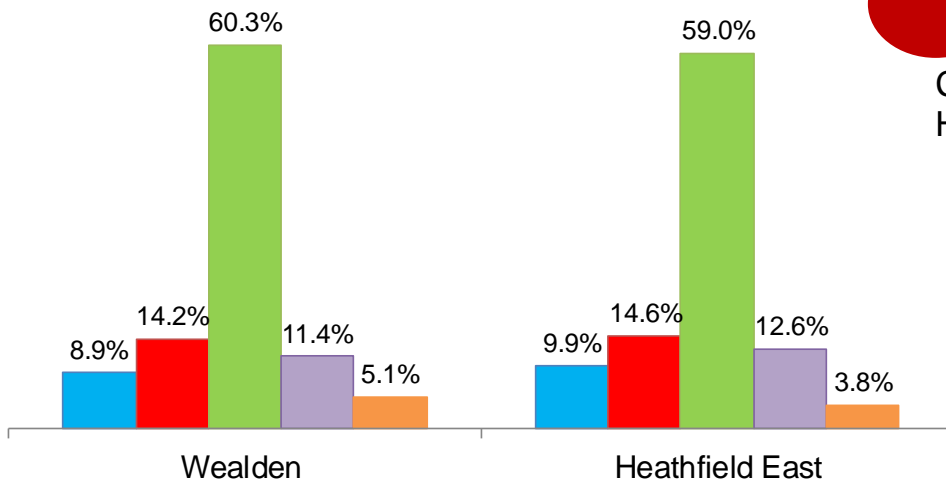
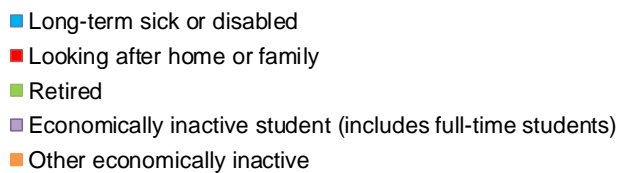
**18.6%** of households in Heathfield East are living in **poverty**\*

\*earning below 60% of GB median income.

## Economic Activity

7 of the lone parent households in Heathfield East are not in employment.

### Economically Inactive



**70.6%** of 16 – 74 year olds in Heathfield East are **economically active** (Wealden = 70.1%)

Compared to Wealden, Heathfield East has a

1. Higher % of Long-term sick or disabled and Economically inactive students.
2. Smaller % of Other economically inactive and Retired.



[policy@wealden.gov.uk](mailto:policy@wealden.gov.uk)

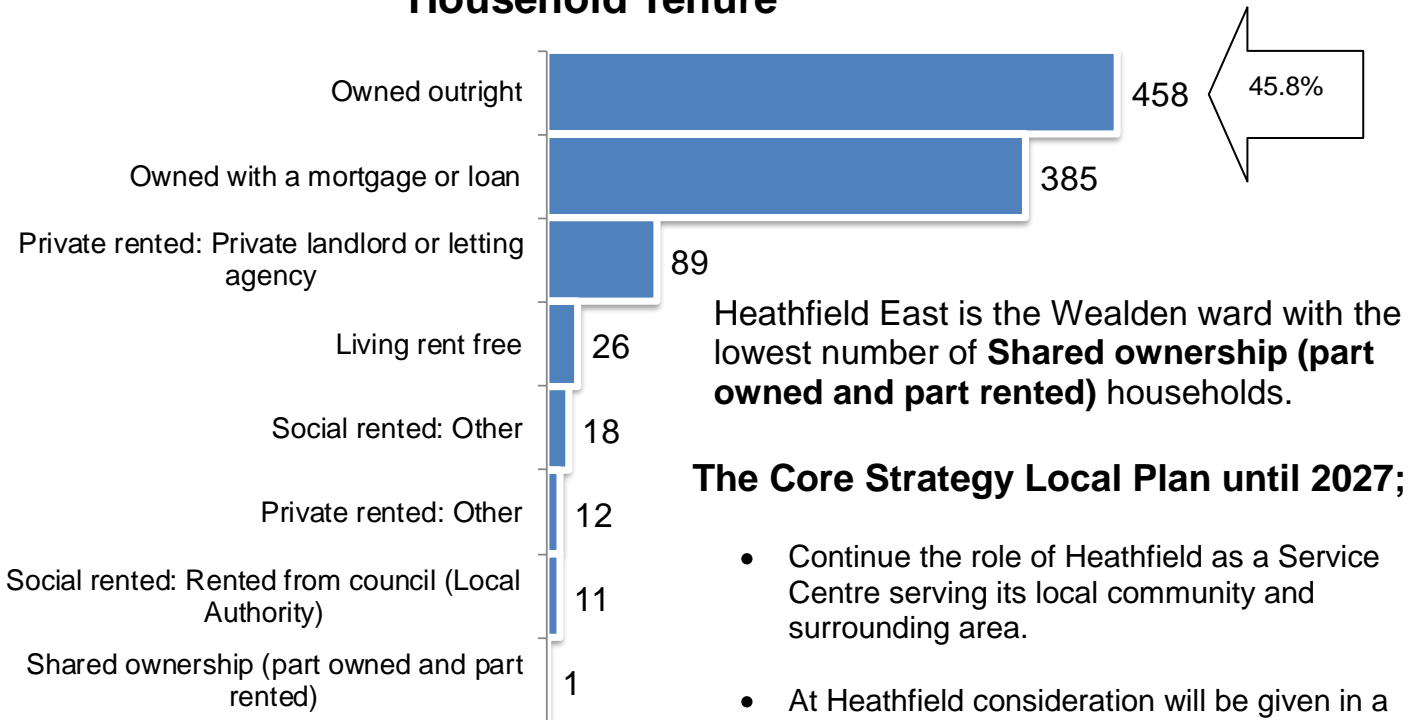
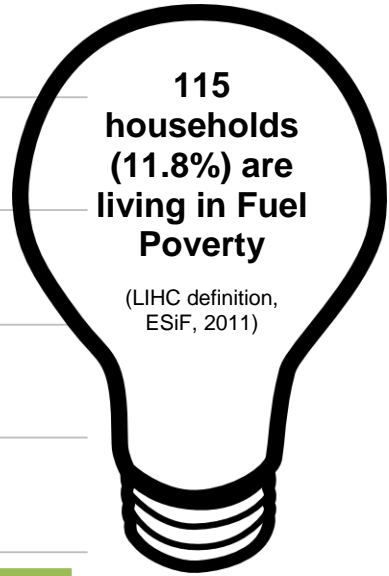
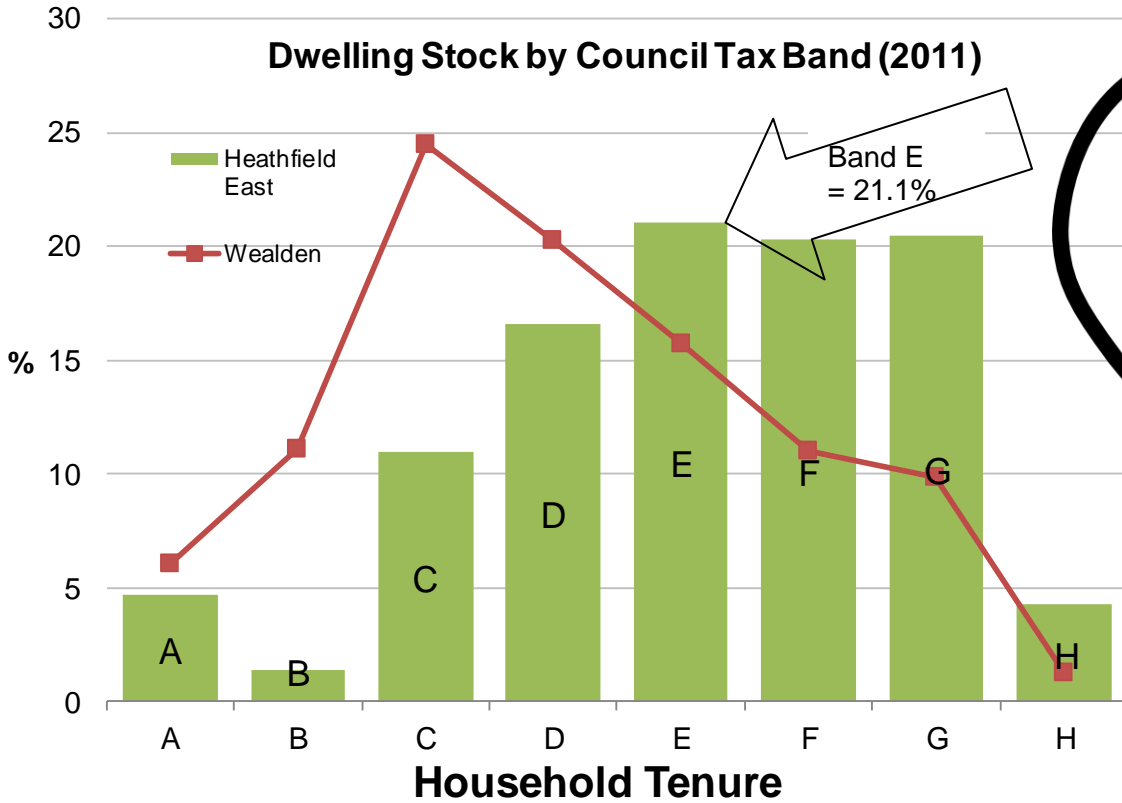


01232 443186

# Housing and Development in Heathfield East

(Data taken from the 2011 ONS Census, unless otherwise stated)

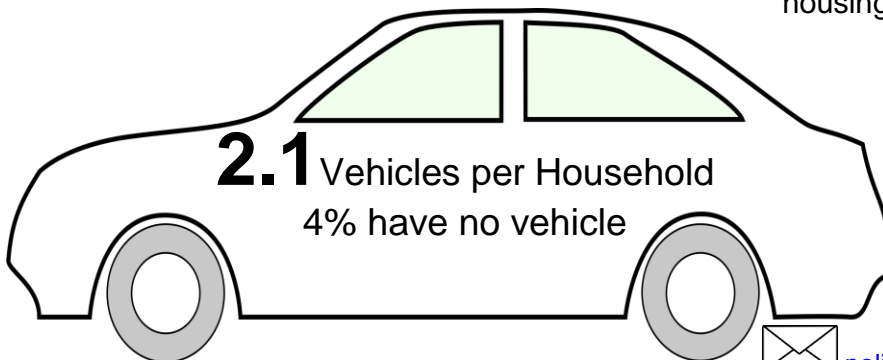
## Dwelling Stock by Council Tax Band (2011)



Heathfield East is the Wealden ward with the lowest number of **Shared ownership (part owned and part rented)** households.

### The Core Strategy Local Plan until 2027;

- Continue the role of Heathfield as a Service Centre serving its local community and surrounding area.
- At Heathfield consideration will be given in a subsequent Local Plan to the identification of housing sites.
- Will remove the development boundary as shown in the adopted Wealden Local Plan 1998 at Punnetts Town.
- Classifies Rushlake Green as a Neighbourhood Centre.



[policy@wealden.gov.uk](mailto:policy@wealden.gov.uk)



01323 443186